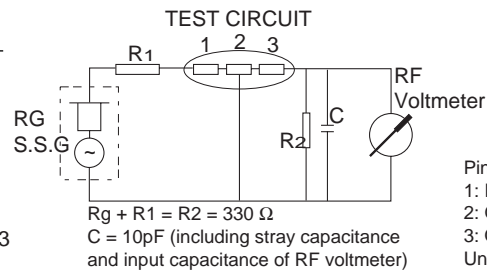
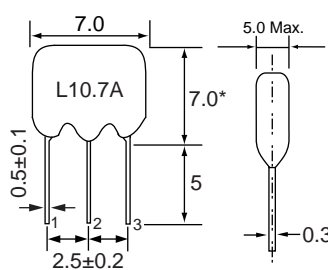
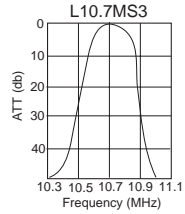
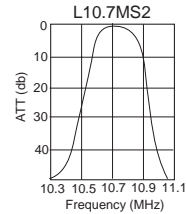
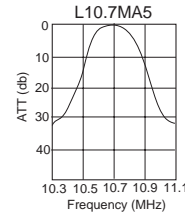


L10.7M & LT6.5M CERAMIC FILTER SERIES

CERAMIC FILTER - L10.7M

PART NUMBER	3dB Bandwidth (kHz)	20dB Bandwidth (kHz dB)	Insertion Loss (dB)	Stop Band Attenuation (dB)	Input/Output Impedance (Ω)
L10.7MA5	280 ± 50	≤ 650	≤ 6	≥ 30	330
L10.7MS2	230 ± 50	≤ 600	≤ 6	≥ 40	330
L10.7MS3	180 ± 40	≤ 520	≤ 7	≥ 40	330

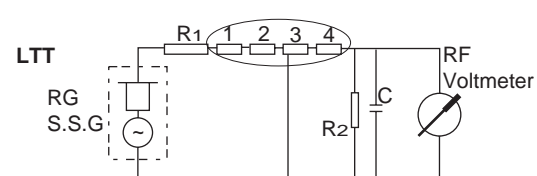
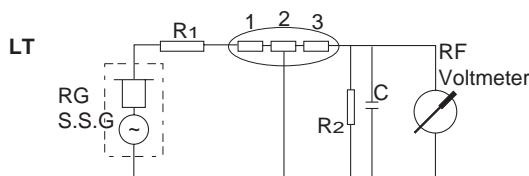
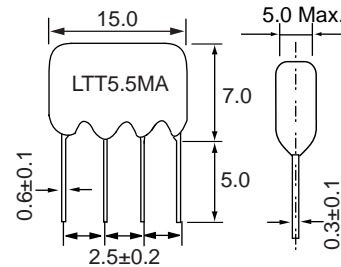
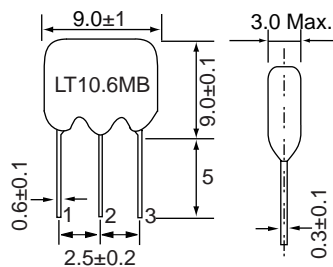
D	BLACK	$10.64\text{MHz} \pm 30\text{kHz}$
B	YELLOW	$10.67\text{MHz} \pm 30\text{kHz}$
A	RED	$10.70\text{MHz} \pm 30\text{kHz}$
C	ORANGE	$10.73\text{MHz} \pm 30\text{kHz}$
E	WHITE	$10.76\text{MHz} \pm 30\text{kHz}$



Pin Connections:
1: Input
2: Ground
3: Output
Unit: mm

CERAMIC FILTER - L6.5M

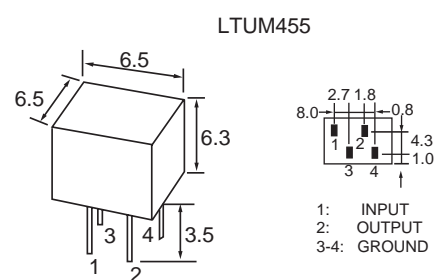
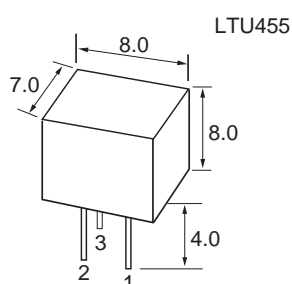
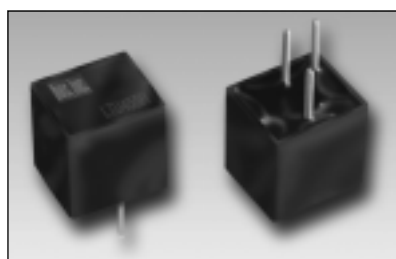
PART NUMBER	3dB Bandwidth (kHz)	20dB Bandwidth (kHz dB)	Insertion Loss (dB)	Stop Band Attenuation (dB)	Input/Output Impedance (Ω)
LT4.5MB	$\geq \pm 60$	≤ 530	≤ 6	≥ 20	1000
LT5.5MB	$\geq \pm 75$	≤ 550	≤ 6	≥ 25	600
LT6.0MB	$\geq \pm 80$	≤ 600	≤ 6	≥ 25	470
LT6.5MB	$\geq \pm 80$	≤ 630	≤ 6	≥ 25	470
LTT5.5MA	$\geq \pm 50$	≤ 350	≤ 9	≥ 50	600
LTT6.0MA	$\geq \pm 50$	≤ 400	≤ 9	≥ 50	470
LTT6.5MA	$\geq \pm 50$	≤ 400	≤ 9	≥ 50	470



Rg + R1 = R2 (R2 Input / Output Impedance)
C = 10pF (including stray capacitance and input capacitance of RF voltmeter)

LTU455 / LTUM455

PART NUMBER		FREQUENCY kHz	6dB Bandwidth kHz	40dB Bandwidth kHz	Stop Band Attenuation dB	Insertion Loss	Input/Output Impedance Ω
LTU455B ₂	LTUM455B	455 \pm 1.5	$\geq \pm 15$	$\leq \pm 30$	≥ 27	≤ 4	1500
LTU455C ₂	LTUM455C	455 \pm 1.5	$\geq \pm 12.5$	$\leq \pm 24$	≥ 27	≤ 4	1500
LTU455D ₂	LTUM455D	455 \pm 1.5	$\geq \pm 10$	$\leq \pm 20$	≥ 27	≤ 4	1500
LTU455E ₂	LTUM455E	455 \pm 1.5	$\geq \pm 7.5$	$\leq \pm 15$	≥ 27	≤ 6	1500
LTU455F ₂	LTUM455F	455 \pm 1.5	$\geq \pm 6.0$	$\leq \pm 12.5$	≥ 27	≤ 6	2000
LTU455G ₂	LTUM455G	455 \pm 1.5	$\geq \pm 4.5$	$\leq \pm 10$	≥ 27	≤ 6	2000
LTU455H ₂	LTUM455H	455 \pm 1.5	$\geq \pm 3.0$	$\leq \pm 9$	≥ 27	≤ 6	2000



LTW455 / LTWM455

PART NUMBER		FREQUENCY kHz	6dB Bandwidth kHz	40dB Bandwidth (kHz)	Stop Band Attenuation (dB)	Insertion Loss	Input/Output Impedance k Ω
LTW455B	LTWM455B	455 \pm 1.5	$\geq \pm 15$	$\leq \pm 30$	≥ 35	≤ 4	1.5
LTW455C	LTWM455C	455 \pm 1.5	$\geq \pm 12.5$	$\leq \pm 24$	≥ 35	≤ 4	1.5
LTW455D	LTWM455D	455 \pm 1.5	$\geq \pm 10$	$\leq \pm 20$	≥ 35	≤ 4	1.5
LTW455E	LTWM455E	455 \pm 1.5	$\geq \pm 7.5$	$\leq \pm 15$	≥ 35	≤ 6	1.5
LTW455F	LTWM455F	455 \pm 1.5	$\geq \pm 6.0$	$\leq \pm 12.5$	≥ 35	≤ 6	2.0
LTW455G	LTWM455G	455 \pm 1.5	$\geq \pm 4.5$	$\leq \pm 10$	≥ 35	≤ 6	2.0
LTW455H	LTWM455H	455 \pm 1.5	$\geq \pm 3.0$	$\leq \pm 9$	≥ 35	≤ 6	2.0

